

# Winston Represented Upstream Rehabilitation in the Sale of Therapy Direct to Enlyte

AUGUST 31, 2023

Winston represented Upstream Rehabilitation, an Alabama-based portfolio company of Revelstoke Capital Partners, in the sale of Therapy Direct to Enlyte, a California-based leader in cost-containment technology, independent medical exams (IME), provider and specialty networks, case management services, pharmacy benefit, and disability management. Therapy Direct offers a national network of therapists and care coordinators with a proven record of reducing time away from work, reducing medical spend, and helping injured employees return to work safely and efficiently.

Less Than 1 Min Read

## Related Capabilities

Transactions

Health Care

## Related Professionals

---



Rachel Ingwer



Paul W. Jezierny



Eric J. Knickrehm



Scott Landau



Justin Levy



Eric Shinabarger



Alessandra Swanson



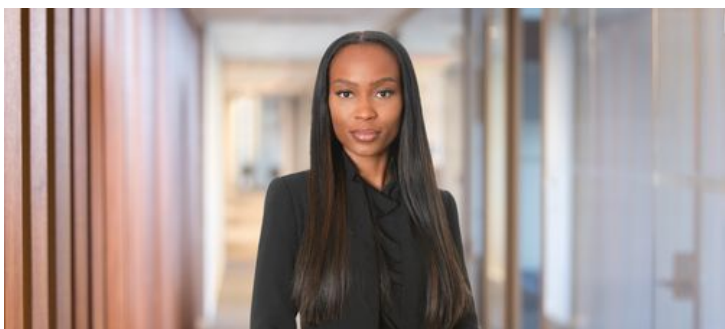
Becky Troutman



Sofia R. Bonfiglio



Christine J. Ko



Isha G. McCalla